

1. Đề 1

SECTION 1 - Questions 1-10

Questions 1 and 2

Complete the notes below. Write **NO MORE THAN THREE WORDS** for each answer.

MIC HOUSE AGENCY — REPAIRS

Address: Apartment 2, (1), Newton.

Length of lease: one year.

Date moved in: (2)

Questions 3-9: Complete the table below. Write:

- A. if the repair will be done immediately.
- B. if the repair will be done during the following week.
- C. if the repair will be done in two or more weeks.

Item	Problem	When to be done
washing machine	leaking	
cooker	(3)	(4)
windows	(5)	B
(6)	flickers	(7)
(8)	torn	(9)

Question 10

Write **NO MORE THAN THREE WORDS** or **A NUMBER** for each answer.

Workman to call between (10) and

SECTION 2 - Question 11-20

Questions 11 and 12: Circle the correct letters A-C.

11. At Rainforest Lodge there aren't any...

- A. telephones or TVs.
- B. newspapers or TVs.
- C. telephones or newspapers.

12. The guests are told to...

- A. carry their luggage to the cabin.
- B. go straight to the restaurant.
- C. wait an hour for dinner.

Questions 13-15: Complete the table below. Write **NO MORE THAN THREE WORDS** for each answer.

TOUR NAME	DETAILS
Orchid and Fungi	walking tour
Four-Wheel-Drive	tour to the (13)
Fishing	to catch lunch
Crocodile Cruise	departs at (14) daily
(15)	departs at sundown

Questions 16-20: Write **NO MORE THAN THREE WORDS** for each answer

What **THREE** items of clothing does the speaker recommend for the rainforest?

16.

17.

18.

Which **TWO** things in the rainforest does the speaker give a warning about?

19.

20.

SECTION 3 - Questions 21-30

Questions 21-25: Circle the correct letters A-C.

21. These sessions with a counsellor are...

A. compulsory for all students.

B. available to any students.

C. for science students only.

22. The counsellor says that new students have to...

A. spend more time on the college premises.

B. get used to working independently.

C. work harder than they did at school.

23. John complains that the resource centre...

A. has limited opening hours.

B. has too few resources.

C. gets too crowded.

24. The counsellor suggests to John that...

A. most other students can cope.

B. he needs to study all the time.

C. he should be able to fit in some leisure activities.

25. Before being able to help John the counsellor needs to...

A. talk with some of his lecturers.

B. consult his tutor.

C. get more information from him.

Questions 26-30

Complete the notes below. Write NO MORE THAN THREE WORDS for each answer.

WRITING

- Pay careful attention to the question
- Leave time to (26)

LISTENING

- Try to (27) lectures
- Check notes with (28)

READING

- Choose topics of (29)
- Buy a good (30)

SECTION 4 - Question 31-40

Questions 31-35

Circle the correct letters A-C.

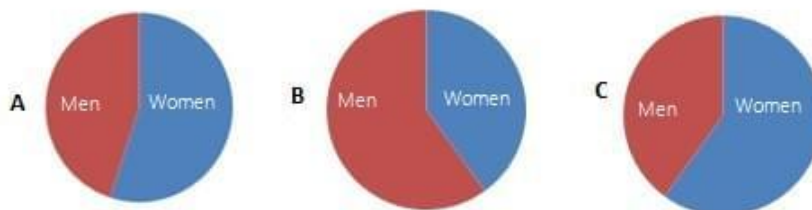
31. John was first interested in the subject because of something...

- A. he had witnessed.
- B. he had read about.
- C. he had experienced.

32. The main research method was...

- A. interviews.
- B. questionnaires.
- C. observation.

33. Which pie chart shows the proportion of men and women respondents?



34. How many respondents were there?

- A. 50-100
- B. 100-150
- C. 150-200

35. The most common type of road rage incident involved...

- A. damage to property.
- B. personal violence.
- C. verbal abuse.

Questions 36-40

Which group gave the following advice?

Tick Column **A** if it was mainly women.

Tick Column **B** if it was mainly men.

Tick Column **C** if it was both men and women.

	A	B	C
Example: Don't stop to ask directions.	✓		
(36) Avoid eye contact with other drivers.			
(37) Inform someone of your likely arrival time.			
(38) Ensure car keys are ready when you return to the car.			
(39) Leave plenty of space when parking.			
(40) Keep all doors locked.			

2. Đề 2

SECTION 1 (Questions 1 – 10)

Choose the correct letter A-F. Listen to a travel agent talking about interesting places to visit in Wales. Match the correct activities & beaches with each place. Some of the choices may be used more than once.

WELCOME TO WALES

Places

1. Aberdoverly
2. Abersoch
3. Barafundle Bay
4. Barmouth
5. Llanddwyn Bay
6. Llangrannog
7. Marloes Sands
8. Pendine Sands
9. Rhossili Beach
10. Tenny

Activities & Beaches

- A. surfing
- B. sailing
- C. racing events
- D. fishing
- E. beaches for the spectacular view
- F. golden sandy beach

SECTION 2 (Questions 11-20)

Questions 11 - 16

Complete the table below. Write **NO MORE THAN THREE WORDS AND/OR A NUMBER** for each answer.

Time	Content	Location
9.00am	Title of the lecture 11 Lecture; John Smith from the 12	Main hall
10.30am	Presentation of papers	Garden room on the ground floor
11.15am	Coffee break	Main hall
1.00pm	Lunch	Sea view restaurant on the 13 The lift on the 14
2.00pm	Presentation of further papers	Ballroom
15 pm	Afternoon tea	Ballroom
5.00pm	Conference will be finished	Main hall
5.10-6.10pm	Informal reception	16

Questions 17-20

Choose the correct letter, A, B, or C.

17. Tickets are available

- A. only at the reception desk.
- B. tomorrow evening.
- C. at any time before the reception.

18. The delegates will be charged for lunch.

- A. \$6.50
- B. \$15.00
- C. \$25.00

19. The restaurant is famous for

- A. steak.
- B. fish.
- C. barbecue.

20. The trip on Sunday costs

- A. \$35 in total.
- B. \$35 plus entrance fees.
- C. \$35 plus lunch.

SECTION 3 (Question 21 – 30)

Questions 21-26

Complete the table below. Write NO MORE THAN TWO WORDS for each answer.

Project Number	Material Needed	Procedure
Project 1	scissors, markers, stiff paper and pieces of 21	Cut out holes for eyes and nose. Then 22 in the mask.
Project 2	shoebox, Styrofoam and other materials	Students can make a 23 scene or somewhere they have been before.
Project 3	egg cartons and pipe cleaners, which are flexible lengths of 24..... That are furry	Stick pipe cleaners onto egg cartons to make animals.

Project 4	white or brown bags, markers, and pieces of felt	Students can decorate the 25..... Of the paper bag.
Project 5	paper mache, made by tearing up newspapers into strips and dipping	Can cover any 26 with the strips, like a blown-up

What problems do Jimi and Janis identify for each art project?

Questions 27-30: Choose your answers from the box and write the letters A-G

Project 1: 27
Project 2: 28
Project 3: E (Example)
Project 4: 29
Project 5: 30

Problems

- A. might take too much time
- B. seems really messy
- C. may have already done it
- D. might be too easy
- E. might be hard to get materials
- F. seems dangerous
- G. might be too difficult

SECTION 4 (Questions 31 – 40)

Questions 31-33: Circle the correct answer A-C.

31. What does QWERTY stand for?

- A. letters on the top row of the keyboard
- B. the company that made the first typewriter
- C. letters on the home row of the keyboard

32. The first commercial typewriter was developed in

- A. Germany.
- B. Great Britain.
- C. United States.

33. The purpose of the QWERTY keyboard Layout was....

- A. to slow typing speed.
- B. to prevent keys from sticking.
- C. to reduce typing inefficiency.

Questions 34-39

Complete the summary below. Write NO MORE THAN THREE WORDS for each answer.

In 1932 August Dvorak solved the inefficiency problem by re-designing the **34**..... of the typewriter. He put the most commonly used letters on the home row. Using the Dvorak keyboard, over 3000 words or **35** of all work can be done from the home row. In contrast, only **36** can be typed from the home row on the Qwerty keyboard. Other advantages of the Dvorak keyboard include a 50% improvement in **37** and a 15-20% increase in **38**..... Typists using the QWERTY keyboard moved their fingers **39**..... miles per day compared to one mile a day for Dvorak typists.

Question 40: Circle the correct letter A-C.

40. Which of these was the main reason why the Dvorak keyboard was never adopted?

- A. the Depression of 1929
- B. bad timing
- C. resistance to change

3. Đề 3

Bài tập thuộc chương trình học của lớp IELTS ONLINE 1 KÈM 1 của IELTS TUTOR

SECTION 1 (Questions 1-10)

Questions 1-6

Complete the form using **NO MORE THAN THREE WORDS** for each answer.

Buying a Used Car: Contact Details

Model: Celica

Year: 1985 EXAMPLE

Number of Owners: **1**

Condition: overall good.

2 done last year.

Reason for Selling: **3**

Asking Price: **4**

Appointment Time: **5**

Address: **6** Parkwood.

Contact name: Elena

Questions 7-10

Circle the correct letter A-C.

7. What happened to Sam's car?

A. It was replaced by another one.

B. It broke down.

C. It was stolen.

8. Why does Jan need a car now?

- A. She lives too far from the university.
- B. She spends too much time on the bus.
- C. She would feel safer at night with a car.

9. What does Sam recommend?

- A. check the service records
- B. avoid buying an old car
- C. get a mechanical inspection

10. How are they travelling to Elena's?

- A. by motorcycle
- B. on foot
- C. by bus

SECTION 2 (Questions 11 – 20)

Listen to the introduction about Tower Bridge and complete the summary.
Use words or phrases from the box. There are more words **BELOW** than you need.

Tower Bridge, the first bridge over the **11** was built in **12**
The original designers wanted to make it look like the Tower of London not **13**
..... Compared with the Tower, which has almost a **14** history,
Tower Bridge is just over one hundred.
Many workers spent **15** in building this wonderful bridge. One special
feature about this bridge is that it can **16** in the middle while the big
ships are **17** to the **18** of London.
Today, it has become a famous **19** I bet you will never forget the scene
if you see the bridge with its two opening **20** high in the air.

Located	arms	going through
Pool	times	1890s
the tower of London	open	close
in addition	a modern bridge	1819
8 years	bird eye view	tourist attraction
Thames	thousand year	Proposed

SECTION 3 (Questions 21-30)

Write **NO MORE THAN THREE WORDS OR NUMBERS** for each answer.

NOTES ON APPLICATION

Name: Jonathan Briggs

Degree: Economics and **21**

Teaching experience: Volunteer Teacher

Location: **22**

Dates: **23**

Volunteer Organisation: **24**

Type of school: **25**

Subjects taught: **26** from 1, 2 and 3

English from **27**

Agricultural science from 6

Other responsibilities: ran school farm

NOTES (continued)

Reasons for wanting to **28**

leave in first year: few teaching resources

Reasons for wanting to train It is his **29**

to teach Geography: It has many **30**

SECTION 4 (Questions 31 – 40)

Complete the table below. Write **NO MORE THAN TWO WORDS AND/OR A NUMBER** for each answer.

Source

31. There are some man-made materials like

32. Before being used, material undergoes

33. Wood should be cut and

34. Stone should be cut and

Selection

35. Aside from environmental factors, one should take into account during construction.

36. Some properties of materials affect mood, such as texture, and colour.

37. use a mathematical formula to choose the type of wood, because are subjective, which are ambiguous in verbal description.

Questions 38-40

Complete the table below. Write **NO MORE THAN TWO WORDS AND/OR A NUMBER** for each answer.

MATERIAL	REFLECTANCE RATE
Polished silver	Almost 1.0
White-painted plastic	Approximately 38
Quarry tile	Approximately 39
40	Almost 0.0

4. Đề 4

SECTION 1 (Questions 1 – 10)

Questions 1-6

Complete the form below. Write **NO MORE THAN TWO WORDS AND/OR A NUMBER** for each answer.

REQUEST FOR COMMERCIAL LEASE	
Name:	Mr. R. Rich
Example	Answer
Company:	ICT industries
Preferred location:	1
Near:	2
Size:	3
Number of staff:	4
Special needs:	5 access parking for mobility scooter
Moving date:	during month of 6

Questions 7-10

Complete the notes below. Write **ONE WORD AND/OR A NUMBER** for each answer.

Requirements:
* Good lift access
* Large lobby
* Removal of some 7

- * **8** too small-make bigger
- * Change office near entry to storeroom
- * New:
 - paintwork
 - lights
 - blinds
 - **9**
- * Minimum length of lease **10** (with right of renewal)

SECTION 2 (Questions 11-20)

Questions 11-15

Choose the correct letter A, B or C.

11. The guided bushwalk is suitable for

- A. adults only
- B. children over 12 and adults
- C. children over 8 accompanied by a parent

12. On the bird observation outing, it is recommended that you have

- A. waterproof footwear
- B. a bird identification book
- C. binoculars

13. For the trip to the sand dunes, a company will donate

- A. water
- B. tools
- C. gloves

14. The bush tucker excursion will cost (per person)

- A. \$15
- B. \$12
- C. \$7

15. The deadline to register for the bush tucker outing is

- A. 25 November
- B. 15 November
- C. 10 November

Questions 16-20

Complete the table below. Write **NO MORE THAN TWO WORDS AND/OR A NUMBER** for each answer.

Activity	Leader	Date	Venue	Time
Bush walk	Glenn Ford	16	Springvale	17-1pm
Bird watching	Joy Black, club 18	10 September	Camford	4.30-6.30pm
Sand dunes	Rex Rose	26 November	19	8.30-10.30am
Bush tucker	Jim Kerr, ranger	3 December	Carson Hills	10am- 20

SECTION 3 (Questions 21 – 30)

Questions 21-23

Which **THREE** symptoms of compulsive eating disorder are mentioned?

Choose **THREE** letters A-F.

- A. overeating
- B. excess weight
- C. weight loss
- D. constant hunger
- E. depression
- F. continuous eating

Questions 24-28

Write **NO MORE THAN TWO WORDS** for each answer. Complete the flow chart below.

COMPULSIVE EATING DISORDER

Illness starts with **24**

Patient **25** of food intake

Patient begins to feel **26** by Behaviour

Patient goes on **27**

Patient starts **28**

Questions 29 and 30

Complete the sentences below. Write **NO MORE THAN TWO WORDS** for each answer.

- 29.** What disease can sufferers of compulsive eating disorder develop?
.....
- 30.** Which organisation offers help to people suffering from compulsive eating disorder?

SECTION 4 (Questions 31 – 40)

Write NO MORE THAN THREE WORDS OR / AND A NUMBER for each answer.

ADVENTURE CLASSES

A particular program: combine **31** and real-life exploration

Purpose: make students aware of international communication and **32**

Type of class	Australia short program	African safari program	Sea education association
Course contents	In Cairns: classes on (33)..... protection A (34)..... of Queensland	Professors teach (36)..... Learn African cultures through trips	Combine (39)..... and instruction in sailing
Highlight	Tour to Great Barrier Reef	3 or 4 safaris – students (37)..... outside for 6 days	Every participant (40)..... and navigates the ship in turn
Credit	(35).....semester credits	8 college credits	
Tuition fee	\$ 1,950	(38) \$.....	\$ 3,600

5. Đề 5

SECTION 1 (Questions 1 – 10)

Write ONE WORD ONLY.

Complete the table below. Listen to the results of a radio questionnaire on sports and physical exercises and complete.

Activities	% Men	% Women
Physical exercise	40	(1)
Watching sport on TV	41	(2)
Jogging	20	(3)
Football	(4)	None
(5)	19	None
Walking	(6)	90
Athletics	(7)	None
Dancing	3	(8)
(9)	2	5
(10)	11	13

SECTION 2 (Questions 11 – 20)

Questions 11-16

Complete the notes below. Write **NO MORE THAN TWO WORDS** for each answer.

Keeping Kids Safe on the Internet

- Internet for children-scary but educational
- 'Online Family Narris' blocks 11 and social sites
- But still important to watch children and 12 them
- Keep computer in family room where you can see it
- Children should never use their own name nor give out 13
- Online friends stay online!
- No personal email address for youngsters
- Teach teenagers that 14 on the Internet always stay there - and may ruin job prospects
- Watch out for 15
- Teenagers use Internet: to socialize or do 16
- Young kids: find help with school subjects

Questions 17-20

Complete the table below. Write **NO MORE THAN TWO WORDS**

Website	Content	Activity	Age group
www.mathtutor.com	mathematics	practice & 17	All levels
www.spellcity.com	spelling	18	Primary school
www.beeb.co/typing	Typing	19	All levels
www.coolresource.com	20	Extra practice	Middle school

SECTION 3 (Questions 21 – 30)

Questions 21-22

Choose Two letters, A-E.

What TWO things do Brad and Helen agree to say about listening in groups?

- A) Listening skills are often overlooked in business training.
- B) Learning to listen well is a skill that's easy for most people to learn.
- C) It's sometimes acceptable to argue against speakers.
- D) Body language is very important when listening.
- E) Listeners should avoid interrupting speakers.

Questions 23-24

Choose TWO letters, A-E.

What TWO things does the article say about goal-setting?

- A. Meeting should start with a clear statement of goals.
- B. It's important for each individual's goals to be explained.
- C. Everybody in the group should have the same goals.
- D. Goals should be a mix of the realistic and the ideal.
- E. Goals must always be achievable within a set time.

Questions 25-26

Choose TWO letters, A-E.

What TWO things do Brad and Helen agree weak points in the article's section on conflict resolution?

- A) It doesn't explore the topic in enough detail.
- B) It only discusses conservative views.
- C) It says nothing about the potential value of conflict.
- D) It talks too much about winners and losers.
- E) It doesn't provide definitions of key terms.

Questions 27-30

What actions do Brad and Helen agree to do regarding the following preparation tasks?

Choose FOUR answers from the box and write the correct letter, A-F, next to the questions.

Actions

- A. Contact the tutor for clarification.
- B. Check the assignment specifications.
- C. Leave it until the last task.
- D. Ask a course-mate to help.
- E. Find information on the Internet.
- F. Look through handbooks.

Preparation tasks

- 27. Preparing the PowerPoint
- 28. Using direct quotations
- 29. Creating a handout
- 30. Drawing up a bibliography

SECTION 4 (Questions 31 – 40)

Questions 31-34

Complete the sentences. Write **NO MORE THAN TWO WORDS** for each answer.

Behaviour in parks is controlled by **31**
Insect numbers are reduced by having **32**
A wilderness park does not have any **33**
Observing trees and lying in the grass are examples of **34**

Questions 35-40

Complete the notes. Write **NO MORE THAN TWO WORDS OR A NUMBER** for each answer.

PARKS

1000 years ago	sufficient wilderness
	large forests: people could 35
	desire to preserve nature began with 36
Princes Park	land originally worth £ 37
	designed by Joseph Paxton
	in the middle was a 38
Neighborhood Parks	now regarded as a 39
	satisfy a natural desire
	can be famous, e.g. in 40

6. Đề 6

SECTION 1 (Questions 1 – 10)

Questions 1 – 3

Correct letters A—F. Listen to the first part of the recording and label the plan.

A. small security office

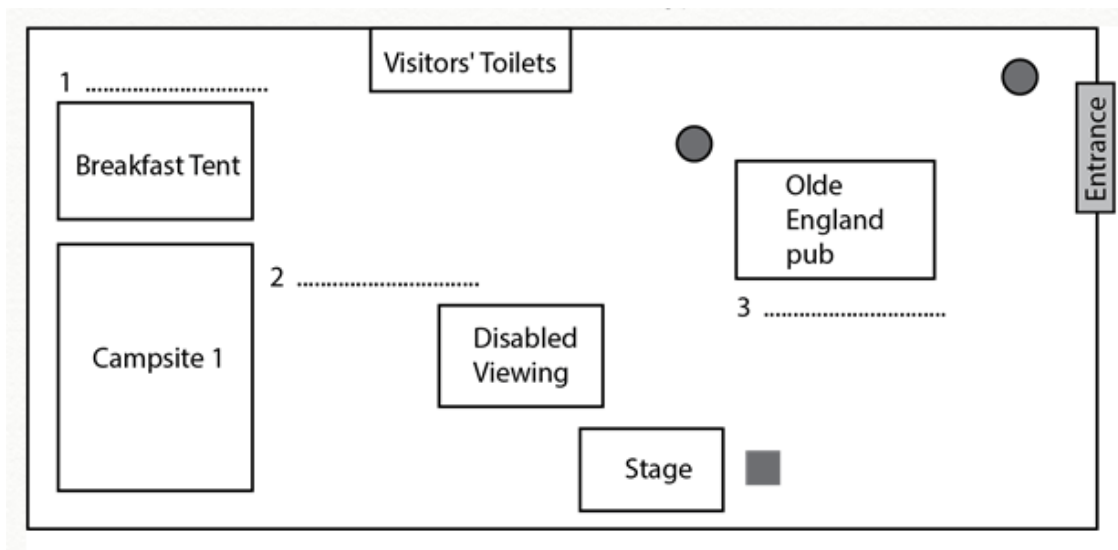
D. staff toilets

B. main security office

E. staff meeting point

C. first aid tent

F. visitors' meeting point



Questions 4 - 6

Complete the sentences below. Write NO MORE THAN TWO WORDS for each answer.

4. In the first year, it was a, and not a real festival.
5. Shortly afterwards the event was moved, and the was in the background.
6. Now the festival is held in the

Questions 7 – 10: Complete the table below.

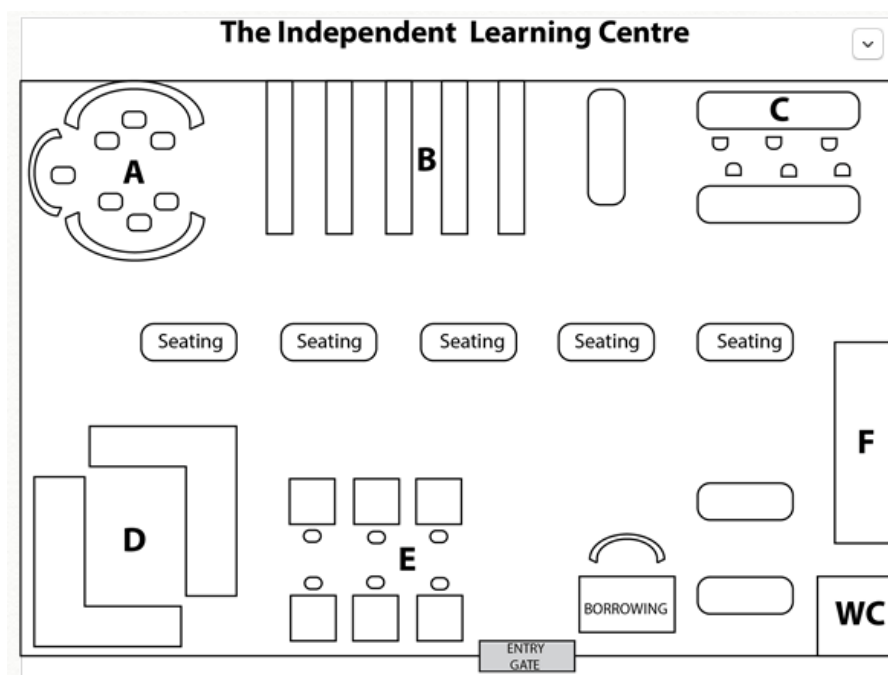
	Children's Zone Security team	Security the stage	First aid team
Meeting place	In Campsite 2	Behind the stage	8 At the
Meeting time	2 p.m.	7 p.m.	4 p.m.
Final meeting time for all teams		9 a.m.	
Final meeting place for all teams		10	

SECTION 2 (Questions 11 – 20)

Questions 11-16

Label the floor plan. Write the correct letter, A-F for each answer.

- 11 Quiet reading
- 12Computers
- 13 Newspapers & magazines
- 14 Reference books
- 15 Audio section
- 16 Main library



Questions 17-20

Complete the timetable. Write the correct letter, A-J, for each answer.

17 Teacher-led discussion

18 Writing skills

19 On-call teacher

20 Language exchange

ILC SPECIAL SESIONS TIME TABLE

	9:00 to 10:30	10:30 to Noon	Noon to 1:30	1:30 to 3:00	3:00 to 4:30	4:30 to 6:00
QUIET READING	A	B		C		D
CENTRAL SEATING	E	F			G	
AUDIO SECTION		H	I	J		

SECTION 3 (Questions 21 – 30)

Questions 21-26

Listen to the talk and circle the correct answer for each question.

21. The speaker compares a solar eclipse today to a

- A. religious experience.
- B. scientific event.
- C. popular spectacle.

22. The speaker says that the dark spot of an eclipse is

- A. simple to predict.
- B. easy to explain.
- C. randomly occurring.

23. With regard to an eclipse, the ancient Chinese were

- A. fascinated
- B. rational
- C. terrified

24. For the speaker, the most impressive aspect of an eclipse is the

- A. exceptional beauty of the sky.
- B. chance for scientific study.
- C. effect of the moon on the sun.

25. Eclipses occur rarely the size of the

- A. moon.
- B. sun.
- C. earth.

26. In predicting eclipses, the Babylonians were restricted by their

- A. religious attitudes.
- B. inaccurate observations.
- C. limited ability to calculate.

Question 27-30: Complete the table below. Write No MORE THAN THREE WORDS.

Date of eclipse	Scientists	Observation
1715	Halley	27 <input type="text"/> who accurately predicted an eclipse
1868	Janssen and Lockyer	Discovered 28 <input type="text"/>
1878	Watson	Believed he had found 29 <input type="text"/>
1919	Einstein	Realised astronomers had misunderstood 30 <input type="text"/>

SECTION 4 (Questions 31 – 40)

Questions 31-36

Write ONE WORD ONLY in each gap.

Charles Wilson Peale

Biography of C.W.Peale

- born in Maryland in 1741 and then became a saddler
- List of his paintings:
 - + 'Pitt as a Roman senator' - elaborate (31) portrait of British parliamentarian
 - + 'George Washington' - (32) potrait of many Washington paintings
 - + 'The Peale family' - family portrait shows exuberance and (33)
 - + 'The Staircase Group' - displayed in a/an (34), double portrait of sons (Raphaelle & Titian)
 - + 'Rache Weeping' - wife and dead (35) - macabre
 - + 'James Potrait' - brother James in darkness but face illuminated by a (36)

Questions 37-40

Complete the summary below. Write ONE WORD ONLY for each answer.

Primarily, Peale was a painter but he was also a politician, scientist and **37**..... with many successful patents.

He worked with Thomas Jefferson on the polygraph which was desk that could be used for copying a **38**

He wrote academic papers on different subjects and tried to make movies, spectacles and a velocipede (a kind of **39**)

Peale was also a naturalist and taxidermist and he helped unearth the skeleton of a mastodon which was the best **40** in his museum.

7. Đề 7

SECTION 1 (Questions 1 – 10)

Write **NO MORE THAN THREE WORDS** for each answer. Choose the correct letter A, B or C.

Example: How many types of membership are there?

- A. Two.
- B. Three.
- C. One.

1. How much is the life-time membership of the Society?

- A. £1,535.
- B. £1,935.
- C. £1,537.

2. How much does the ordinary membership cost per year?

- A. £293.
- B. £396.
- C. £193.

3. What are the opening times on week-days?

- A. 9 am to 10 pm.
- B. 10 am to 9 pm.
- C. 10 am to 5 pm.

4. What is the arts program at the Society like?

- A. limited.
- B. wide
- C. interesting

Questions 5—10

Complete the notes. Write **NO MORE THAN TWO WORDS AND/OR A NUMBER** for answer.

Name: Margaret (5)
Address: 55 (6)
Postcode: (7)
Work number: 0207 895 2220
Extension: (8)
Payment terms by (9)
Guest restrictions one per (10)

SECTION 2 (Questions 11 – 20)

Question 11-12

Choose the correct letter, A, B, C or D.

11. What does Mark think about time management?

- A. It is a subject he would like to talk about.
- B. It is something he does not know much about.
- C. It is something he is not good at.
- D. It is a subject he does like talking about.

12. What does Marks say about the presentation?

- A. He has planned the outline.
- B. He hasn't started planning it yet.
- C. He has thought about which ideas to include.
- D. He needs to change some parts of it.

Questions 13-15

Complete the list below. Write ONE WORD ONLY for each answer.

When is Mark giving the presentation?

(13) 10.00 am

Time Management Presentation

Introduction:

Start with a general statement

Main part:

Common problems

(14) off things, for example, last minute holiday shopping

Relying too much on (15)

Questions 16 - 20

Complete the list below. Write ONE WORD ONLY for each answer.

Improving time management skills

Make to-do lists

(16)

Break down projects into parts (17)

Setting (18)

Dealing with (19)

Using the word (20)

SECTION 3 (Questions 21 – 30)

Questions 21-23

Answer the questions below. Write **NO MORE THAN THREE WORDS** for each answer.

21. What do Sharon and Xiao Li agree was the strongest aspect of their presentation?

22. Which part of their presentation was Xiao Li least happy with?

.....

23. Which section does Sharon feel they should have discussed in more depth?

.....

Questions 24—27

Choose the correct letter, A, B, C

24. Sharon and Xiao Li were surprised when the class said

- A. they spoke too quickly.
- B. they included too much information.
- C. their talk was not well organized.

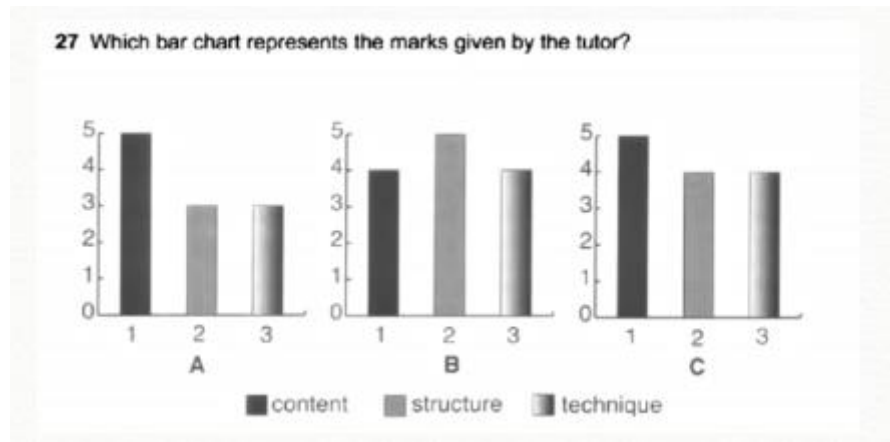
25. The class gave Sharon and Xiao Li conflicting feedback on their

- A. timing.
- B. use of visuals.
- C. use of eye contact.

26. The class thought that the presentation was different from the others because

- A. the analysis was more detailed.
- B. the data collection was more wide ranging.
- C. the background reading was more extensive.

27. Which bar chart represents the marks given by the tutor?



Question 28-30

Complete the sentences below. Write one word only for each answer

28. The tutor says that theof the presentation seemed rather sudden.
29. The tutor praises the student discussion of the of their results.
30. The tutor suggests that they could extend the review in their report.

SECTION 4 (Questions 31 – 40)

Questions 31 — 32:

Circle the correct letters from A —D

31. There are many differences between Urban and community forestry lives.

Please choose the Right descriptions.

- A. Summer temperature of the city are lower than in the surrounding countryside.
- B. Air pollution problems are more concentrated in Urban
- C. The landscape is significantly altered.
- D. People in the country have healthier body.

32. The author thinks _____ solve three problems happened in the city

- A. people in the city
- B. people in the country
- C. trees

Question 33—40

Complete the table below. Write ONE WORD AND/OR A NUMBER for each answer.

Trees are major capital assests:

Streets, side **33**, sewers public buildings and recreational facilities are a part of a community 's **34**, so are publicly owned trees.

Advantage of planting trees:

Trees are on the job **35** hours every day working for all of us to improve our environment and quality of life.

Trees impact deeply providing **36** benefits.

Trees remove **37**..... pollutants by absorbing them through the pores.

The loss of trees in city will intensifies the urban "**38**" – island effect from loss of **39** and evaporation, but also we lose a principal absorber of carbon dioxide and trapper of other **40** pollutants as well.

8. Đề 8

Bài tập thuộc chương trình học của lớp IELTS ONLINE 1 KÈM 1 của IELTS TUTOR

Section 1 (Questions 1 – 10)

Questions 1 – 7

Complete the notes below. Write ONE WORD AND/OR A NUMBER for each answer.

REAL ESTATE COMPLAINT FORM

(1) Name: Jane

(2) Address 3 St, Wendouree

Postcode: 3355

Contact telephone number: 334756

(3) Extension:

(4) Call before and after 6.00 (after work has finished)

Problem: Rent has been (5) by landlord

Commencement date of rent: 1st (6)

End of contract date: (7) 1st

Questions 8 - 10

Complete the notes below. Write NO MORE THAN TWO WORDS for each answer.

We agreed:

- If needed, will send a letter to the Rental Tenancy Board
- Expecting problem to be (8)

Advice for customer:

- Come in and meet with (9) if needed
- Wait until a response is received from the landlord
- Write a (10) listing the events from her point of view

SECTION 2 (Questions 11—20)

Complete the notes below. Write ONE WORD OR A NUMBER for each answer.

WISCONSIN ARBORETUM

Purpose:

Type of facility: 11 and teaching

Type of Place: For people to develop 12 relationship with nature

Origins:

Begun in the 13

Purchased cultivated 14 and pastures that had fallen into disuse

Decided to restore plants and animals that had lived there before 15

Academic Result:

New concept in ecology: ecological 16

Practice: return ecosystem or landscape to 17 condition

Growth Phase:

Civic Leaders 18 land in the 1920s

Crews from the 19 conservation Corps provided most of the labor

Collection:

Include oldest and most extensive restored ecosystem.

Includes traditional elements of an arboretum such as 20 and shrubs.

SECTION 3 (Questions 21 -30)

Questions 21 – 23: Circle the correct answer A – C.

21. What does George have to do next?

- A. get the results of the survey back
- B. draw the results of the survey
- C. make some conclusions

22. What is Anna's market research project on?

- A. violence on television
- B. transportation in the city
- C. the history of transportation

23. What did the results of George's survey show?

- A. everyone thinks there is too much violence on TV
- B. most people think there is too much violence on TV
- C. there is no real agreement on the amount of violence.

Questions 24 — 26

Complete the summary. Write NO MORE THAN THREE WORDS for each answer.

Summary

Children might see the heroes of violent as (24)

So most people think that violent programs should be shown after 10. P.M.

However, there is a (25) who feel that films should be banned.

Although new broadcasts are violent, people felt they shouldn't be banned as they are (26)

Question 27-30

Write the answer using NO MORE THAN THREE WORDS AND / OR A NUMBER.

27. How many questionnaires did George get back?

.....

28. Anna says George's survey doesn't represent?

.....

29. Where is Anna going to interview her respondents?

.....

30. What is the best type of questions for a good questionnaire?

.....

SECTION 4 (Questions 31 – 40)

Complete the notes below. Write NO MORE THAN TWO WORDS for each answer.

Case study — TCP Technologies:

- Manager: Manjeet Khanna
- Main target: to create a 31 environment

Grading for staff:

- Every month grades are published on an 32
- The cultural openness increased the quantity of incoming contracted opportunities.
- The cultural openness improved the level of 33 of the company.
- The increased rate of staff satisfaction has led to grow of 32% in the 34.....

Recent interview:

- A company is not one entity comprised of components, but a living organism composed of cells.
- Manjeet's motto is 35

Benefits of management style:

- The rate of staff turnover has been reduced.
- A 36 can be from any other company
- Grades are not used for 37

Features of managing style:

- Personally, the manager wrote emails to respond to the complaints.
- The complaint form known as a 38 has access to all employees online.
- The manager can receive any complaints concerning air conditioning, food quality and 39 entitlement.
- A 40 on the anonymous complaint was introduced in the new system.